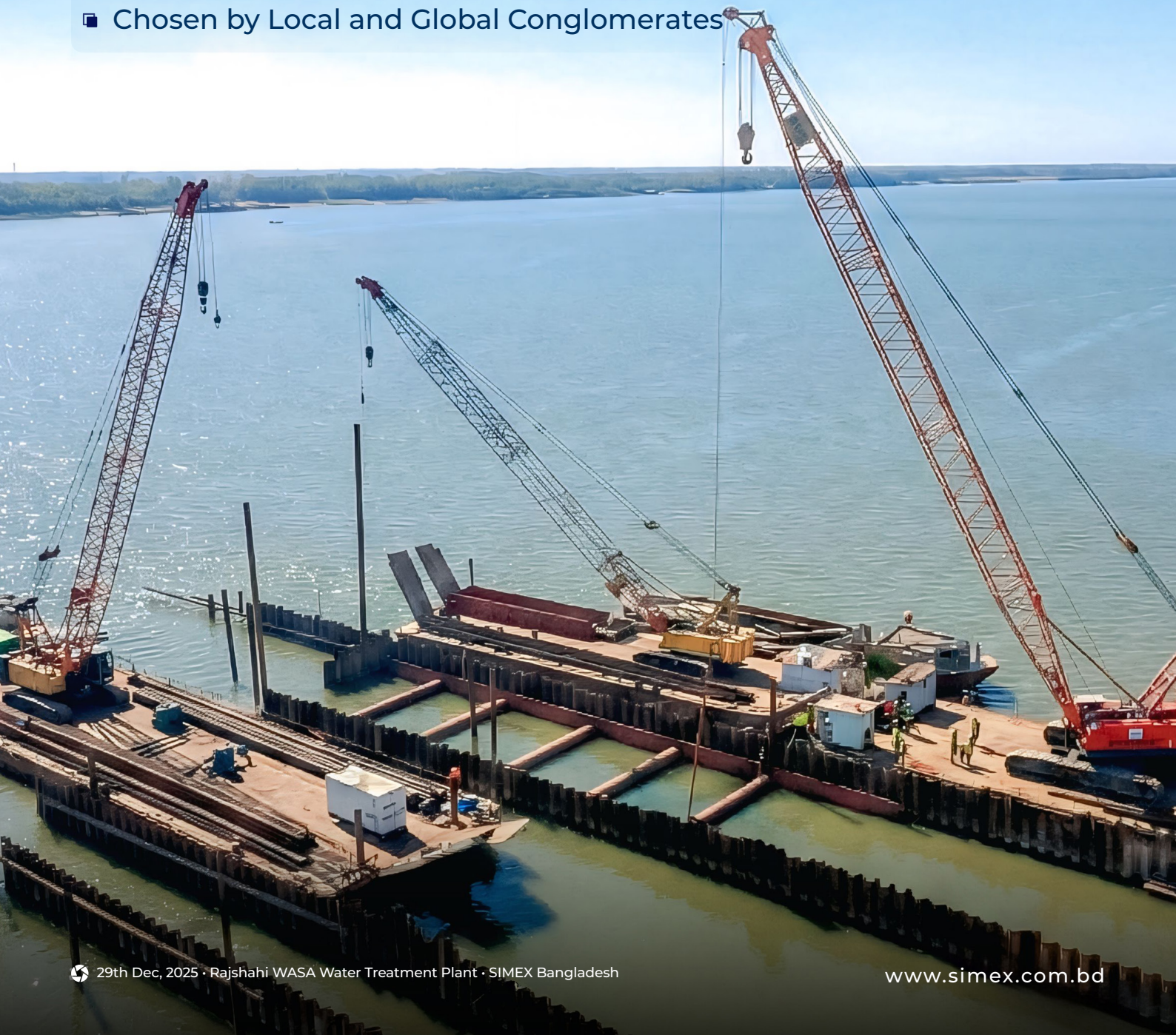


# MARINE DEEP FOUNDATION STEEL & CIVIL WORKS

- Trusted by Global EPC Leaders
- Chosen by Local and Global Conglomerates



## CLIENTS

**SAMSUNG**

**DJN** JAN DE NUL

**suez**  
environnement

**湖南建设投资集团**  
HUNAN CONSTRUCTION INVESTMENT GROUP

**中国电建**  
POWERCHINA

**中国能建**  
ENERGY CHINA

**sepcoil**

**LARSEN & TOUBRO**

**北方工业**  
NORINCO

**四川路桥**  
SABG

**中国铁建** CCECC

**WABAG**

**datapath**

**Coca-Cola**

**BASHUNDHARA GROUP**  
For the People, for the Country

**APEX**

**Unilever**

# CIVIL & INDUSTRIAL INFRASTRUCTURE



Commercial Building



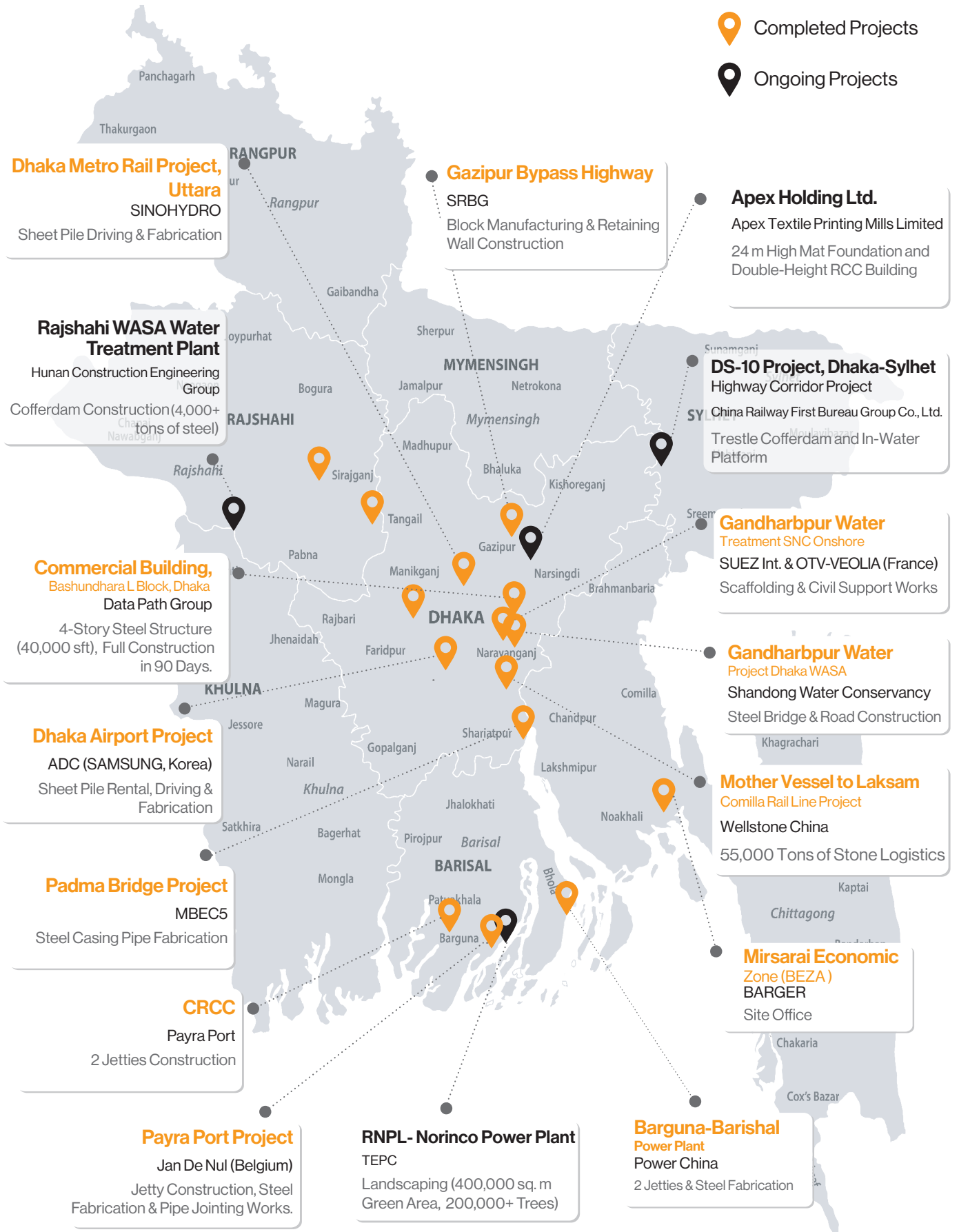
Factory Building



Industrial Landscaping

# OUR PROJECT FOOTPRINT

A map of our extensive experience and nationwide reach.



# WHO WE ARE

## The Powerhouse Behind Bangladesh's Infrastructure

SIMEX Bangladesh is not just a construction company; we are a fully integrated infrastructure partner. We serve as the trusted local gateway for global EPC giants like **Samsung**, **Jan De Nul**, and **Power China**. Specializing in Marine Works, Deep Foundations, and Industrial Steel Structures, we tackle the projects that others find too complex.

## OUR CORE EXPERTISE

Comprehensive **EPC & Turnkey Solutions**. We do not just build; we engineer solutions for the most complex challenges across four core sectors:

### Marine & River Infrastructure:

Specialized in Sheet Pile Cofferdams, Jetties, River Intake Stations, and Shore Protection works using our own barges and marine equipment.

### Industrial & Steel Buildings:

Design, fabrication, and erection of Pre-Engineered Steel Buildings (PEB) for factories, warehouses, and commercial complexes.

### Deep Foundation Engineering:

Execution of Cast-in-Situ Bored Piles, Shore Piles, and heavy foundation systems for bridges and industrial plants.

### Heavy Civil & Logistics:

Large-scale land development, earth-moving, railway logistics, and massive material supply chain management.

### Industrial Landscaping:

Large-scale plantation, green zone development, slope protection, and hardscape solutions for industrial, port, and infrastructure projects.

## OPERATIONAL PROGRESS STATISTICS

### \$50+ Million

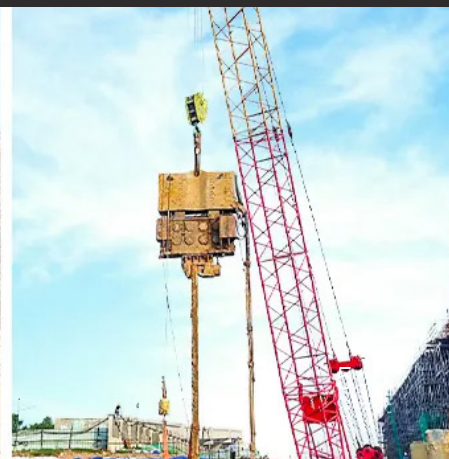
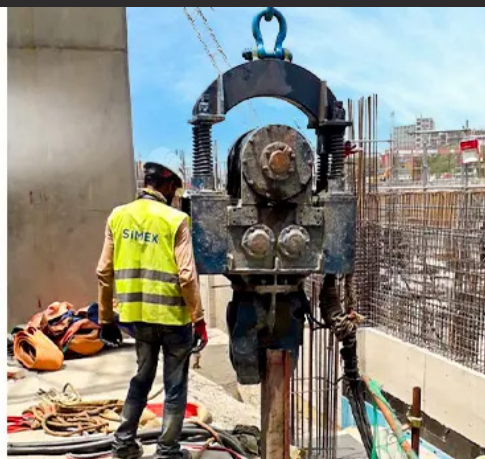
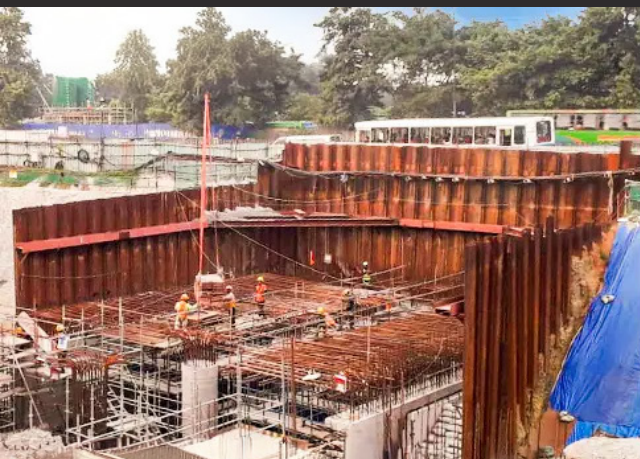
+ Project Value Delivered: Successfully completed high-value projects, including Power Plants and Water Treatment facilities.

### 10,000+ Tons

+ Annual Steel Handling: A combined volume managed annually utilized for our own Project Construction, Factory Fabrication, and Commercial Trading (Import & Supply).

### 80-90% Owned Heavy Equipment

+ Equipment Fleet Strength: Operating a comprehensive fleet of heavy machinery, ensuring rapid mobilization and reducing dependency on third-party rentals.



# STRATEGIC LEADERSHIP

## Executive Leadership

---



**Mohammad Wahid Hossain, ndc**

Chairman

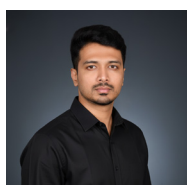
M.A. in Geography and Environmental Science, University of Dhaka



**Dewan Shuvo**

Vice Chairman

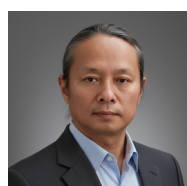
MBA in International Business Lincoln University, California, USA



**Dewan Jamil**

Managing Director

B.Sc. in EEE  
American International University - Bangladesh



**Zhaohui He, Tony**

Deputy Managing Director



**Tina Deng**

Director of Business Development

Guangdong University, Major in Business English



**Commander (Retd.)  
Reja Ahmed Ferdous**

Executive Director

MBA in Marketing, Khulna University

## Engineering Unit

---



**Cao Xu**

Project Manager (Cofferdam)

DS-10 Project, Dhaka Sylhet Highway Corridor Project



**Engr. S.M. Rakib, PMP®**

Senior Project Manager (Planning)

Rajshahi WASA Water Treatment Plant



**Zhou Xiangliang**

Project Manager (Cofferdam)

Rajshahi WASA Water Treatment Plant



**He Dong Dong**

Project Manager (Landscaping)

RNPL-Norinco Power Plant

# EPC Turnkey Solutions

*Concept to Commissioning*

- Detailed Engineering & Design
- Global Procurement & Logistics
- Construction Management
- Testing & Commissioning
- Project Handover & Training



## Key Advantages:



**Single-Point Accountability:** Streamlined project delivery with one entity responsible for design, procurement, and construction, minimizing client risk.



**End-to-End Lifecycle Management:** Seamless integration from feasibility and FEED stage to final handover and support.



**Cost & Schedule Certainty:** Integrated planning and early procurement involvement allow for better budget control and faster project completion track.



**Quality & Safety Compliance:** Rigorous adherence to international QHSE standards across all phases, ensuring durable and safe infrastructure.

## Our Expertise & Services:

- **Engineering & Design**
  - » Concept, feasibility, detail design & structural analysis
  - » Site & environmental risk assessment
- **Procurement Solutions**
  - » Local & International supplier management
  - » BOQ preparation, rate analysis & cost control
- **Construction & Execution**
  - » Civil, Mechanical & Electrical project implementation
  - » Machinery & equipment deployment
  - » Skilled manpower mobilization
- **Testing & Commissioning**
  - » System-level performance testing
  - » Documentation & final client handover

## MAJOR TURNKEY PROJECTS

- » **Rajshahi WASA Surface Water Plant:** Complete execution of River Intake Cofferdam, Access Bridge, and 4,000+ Ton Sheet Pile works.
- » **Payra Port Development:** Construction of Service Jetty, Marine Logistics Support, and Massive Green Zone Landscaping (200,000 Trees).
- » **Dhaka WASA (Gandharpur Project):** Turnkey construction of Heavy Steel Bridge, Access Roads, and 300,000 cum Land Development.
- » **Data Path Group (Bashundhara):** Design-to-Finish construction of a 4-Story Steel IT Building completed in a record 90 days.
- » **National Priority Projects:** Critical Piling & Civil Support for Dhaka Metro Rail and Dhaka Airport Terminal 3 (Samsung C&T).



# Sheet Pile Cofferdam

*Secure Temporary Retaining Walls & Site Protection Solutions*

SIMEX Bangladesh specializes in the design, supply, and installation of high-performance Sheet Pile Cofferdams. Our temporary and permanent retaining structures provide a secure, watertight environment for underwater and subterranean construction. Utilizing advanced driving techniques and high-grade steel, we ensure maximum safety and structural stability for bridge foundations, pump stations, and basements.

## Key Advantages:



**Reliable Water Control:** Excellent watertightness to ensure a dry and safe working area below the water level.



**Structural Stability:** Robust interlocking steel design capable of withstanding high soil and hydrostatic pressure.



**Rapid Installation:** Time-efficient vibro-hammer and impact driving methods to accelerate project schedules.



**Versatile Application:** Suitable for various environments, including riverbanks, marine areas, and soft soil conditions.

## Our Expertise & Services:

- **Engineering & Design**
  - » Customized cofferdam design and stability analysis
  - » Selection of appropriate sheet pile sections (U-type, Z-type)
- **Material Supply**
  - » Sourcing of high-quality steel sheet piles
  - » Supply of waling, strutting, and bracing materials
- **Installation & Extraction**
  - » Precision pile driving using vibro-hammers and impact hammers
  - » Efficient extraction of temporary piles after project completion
- **Bracing & Dewatering**
  - » Design and fabrication of internal bracing systems
  - » Implementation of effective dewatering solutions





# SHEET PILE COFFERDAM CONSTRUCTION

Rajshahi WASA Water Treatment Plant

Client:



湖南建设投资集团  
HUNAN CONSTRUCTION INVESTMENT GROUP

## - Hunan Construction Engineering Group

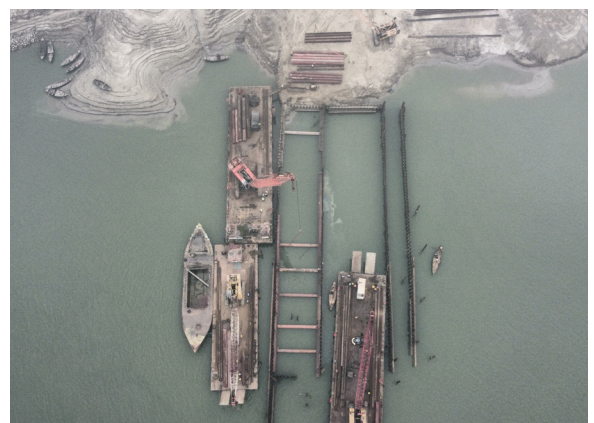
### Project Overview:

SIMEX Bangladesh was entrusted with the critical river engineering works for the Rajshahi WASA Surface Water Treatment Plant. Executed under a rigorous method statement, this project involved the design and installation of complex Sheet Pile Cofferdams to facilitate the construction of the river intake structure, conveying pipelines, and the access bridge. Our team successfully created a dry and secure working environment within the river, overcoming challenging hydrostatic pressures and currents.



### Key Project Scope:

- » **Intake & Pipe Protection:** Installation of extensive temporary cofferdams to enable the safe construction of the Intake Station and Conveying Pipes
- » **Access Bridge Works:** Execution of specialized sheet piling works to support the foundation and piers of the Access Bridge connecting the intake to the shore.
- » **Scale of Operation:** Precision driving and handling of over 4,000 tons of Steel Sheet Piles, ensuring structural integrity and water-tightness throughout the construction phase.



### Project Scope:

- Intake & Conveying Pipe Cofferdam Construction.
- Access Bridge Foundation & Piling Works.
- Installation of 3500+ Tons of Steel Sheet Piles.

### Client:

Hunan Construction Engineering Group

### Location:

Rajshahi, Bangladesh

# Steel Bridge Construction

*Engineering Excellence in Long-Span Connectivity.*

SIMEX Bangladesh specializes in the design, fabrication, and erection of robust steel bridges, ranging from heavy-duty truss bridges to portable Bailey bridges. Combining advanced structural engineering with high-precision fabrication, we deliver infrastructure solutions that ensure superior load-bearing capacity and longevity. Our team is equipped to handle complex river crossings and flyovers with strict adherence to international standards.

## Key Advantages:



**High Strength-to-Weight:** Superior load-bearing capacity with lighter structural dead weight compared to concrete alternatives.



**Rapid Assembly:** Prefabricated steel components allow for faster erection, minimizing traffic disruption and project timelines.



**Durability & Resilience:** Constructed with high-grade steel and advanced coatings to withstand seismic activity and harsh weather.



**Design Flexibility:** Adaptable structural systems suitable for long spans, difficult terrains, and aesthetic requirements.

## Our Expertise & Services:

- **Engineering & Design**
  - » Structural modeling and load analysis
  - » Detailing of connections and shop drawings
- **Fabrication & Material Supply**
  - » CNC cutting, drilling, and certified welding
  - » Supply of high-tensile steel plates and sections
- **Erection & Installation**
  - » Cantilever and incremental launching methods
  - » Heavy lifting and crane operations
- **Maintenance & Rehabilitation**
  - » Bridge strengthening and retrofitting
  - » Anti-corrosion painting and bearing replacement





# STEEL BRIDGE & ACCESS ROAD CONSTRUCTION

Gandharbpur Water Treatment Plant

Client:



## - Shandong Water Conservancy Construction Group

### Project Overview:

SIMEX Bangladesh played a pivotal role in the infrastructure development for the Gandharbpur Water Treatment Plant, a mega-project under Dhaka WASA. We were tasked with establishing the critical connectivity required for the site's operation. Our team successfully constructed a heavy-duty Steel Bridge and the accompanying access roads. This infrastructure now serves as the primary lifeline for the project, enabling the movement of heavy machinery and logistics essential for the water treatment plant's daily operations.



### Key Project Scope:

- » **Steel Bridge Construction:** Complete fabrication and erection of the steel bridge structure designed to withstand heavy construction loads and vehicular traffic.
- » **Access Road Development:** Engineering and construction of durable approach roads to connect the bridge seamlessly with the main project site.
- » **Integrated Civil Works:** Execution of earthworks and civil support to ensure the long-term stability of the bridge foundations and road embankments.



### Project Scope:

- Construction of Steel Bridge Structure.
- Development of Project Access Roads.
- Civil & Earthworks for Site Connectivity.

### Client:

Shandong Water Conservancy Construction Group

### Location:

Narayanganj, Bangladesh

# Commercial Building

Building the Future of Business Infrastructure

SIMEX Bangladesh delivers state-of-the-art commercial building projects, from modern office towers to shopping complexes. We provide end-to-end solutions, including architectural design, structural engineering, and high-quality construction. Our focus on sustainable practices and efficient project management ensures timely delivery of iconic structures that meet the evolving needs of businesses and communities.

## Key Advantages:



**Time & Cost Efficiency:** Streamlined project management and advanced construction techniques for faster delivery and budget control.



**Modern & Functional Design:** Architectural solutions that maximize space utilization and enhance user experience for businesses.



**Quality & Durability:** Use of premium materials and strict quality control to ensure long-lasting and structurally sound buildings.



**Sustainable Practices:** Integration of energy-efficient systems and eco-friendly materials for greener building operations.

## Our Expertise & Services:

- **Engineering & Design**
  - » Architectural planning and interior design
  - » Structural analysis and MEP (Mechanical, Electrical, Plumbing) design
- **Construction & Management**
  - » Site development and foundation work
  - » Multi-story superstructure construction
  - » Project planning, scheduling, and supervision
- **Finishing & Interior Works**
  - » High-quality flooring, wall cladding, and ceiling works
  - » Installation of elevators, HVAC, and fire safety systems
- **Renovation & Retrofitting**
  - » Upgrading existing commercial spaces
  - » Anti-corrosion painting and bearing replacement





# TURNKEY STEEL COMMERCIAL BUILDING CONSTRUCTION

Client:

**datapath**

Data Path Group Office Complex

## - Data Path Group

### Project Overview:

SIMEX Bangladesh set a new benchmark for speed and efficiency in the commercial construction sector with this project for Data Path Group. We successfully delivered a fully functional 4-story software office building covering 40,000 sq. ft. in a record-breaking 90 days. This was a comprehensive "Turnkey" project where SIMEX managed the entire lifecycle starting from deep foundation piling to the final Mechanical, Electrical, and Plumbing (MEP) works handing over a modern workspace ready for immediate operation.

### Key Project Scope:

- » **Rapid Execution:** Complete construction of a 40,000 sft steel-structure building finalized within just 3 months.
- » **End-to-End Delivery:** Managed all phases including Piling, Civil Works, Steel Erection, and Finishing.
- » **MEP Integration:** Full installation of advanced Electrical and Plumbing systems suited for a high-tech software office environment.



### Project Scope:

- 4-Story Steel Building (40,000 sft).
- Turnkey Solution (Piling to MEP).
- Full Construction in 90 Days.

### Client:

Data Path Group

### Location:

Bashundhara L Block, Dhaka

# Jetty Construction

Engineering Durable Gateways for Marine Logistics.

SIMEX Bangladesh specializes in the design and construction of robust jetties and marine structures necessary for efficient port operations and coastal logistics. From heavy-duty cargo wharves to specialized oil and gas terminals, we deliver marine infrastructure engineered to withstand harsh ocean environments, heavy berthing loads, and tidal variations. Our expertise ensures safe and efficient vessel mooring and cargo transfer operations at the interface of land and sea.

## Key Advantages:



**Marine Durability:** Constructed with high-performance, corrosion-resistant materials designed to withstand saltwater intrusion, wave impact, and harsh weather.



**High Load-Bearing Capacity:** Engineered to support extreme forces from vessel berthing and heavy operational cargo loads on the deck.



**Specialized Marine Execution:** Utilization of dedicated marine equipment, such as jack-up barges and floating cranes, for efficient over-water construction.



**Operational Efficiency:** Designs focused on optimizing workflow for rapid vessel turnaround and seamless cargo handling.

## Our Expertise & Services:

- **Marine Engineering & Design**
  - » Hydrodynamic studies and wave load analysis
  - » Structural design of piling, deck, and fender systems
- **Marine Piling Works**
  - » Driving large diameter tubular steel or concrete piles over water
  - » Piling in challenging seabed and deep-water conditions
- **Superstructure Construction**
  - » Installation of precast concrete elements and beams
  - » Cast-in-situ concrete deck slab construction
- **Marine Fixtures & Utilities**
  - » Installation of high-energy fendering systems and mooring bollards
  - » Integration of piping, electrical, and firefighting systems

## 5 Jetty Projects Successfully Completed



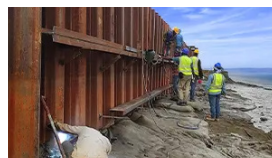
Power Plant Taltoli Jetty Project 1



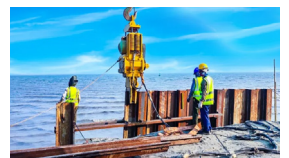
Power Plant Taltoli Jetty Project 2



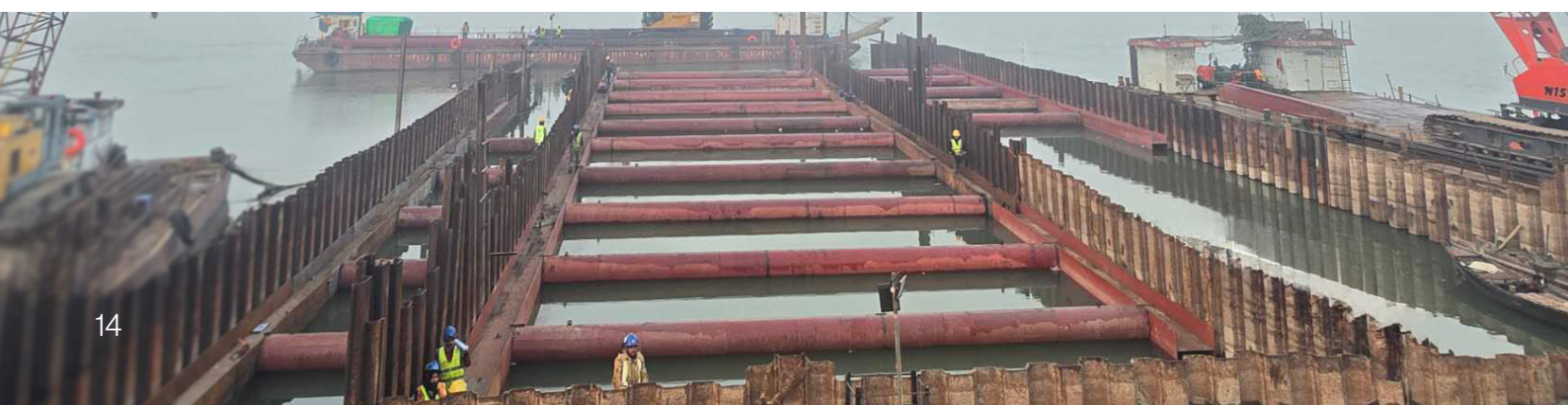
CRCC Jetty Project 1



CRCC Jetty Project 2



Jan De Nul Jetty Project





# JETTY CONSTRUCTION & MARINE LOGISTICS SUPPORT

Payra Port Development Project

- Jan De Nul (Belgium) & CRCC-CCECC

## Project Overview:

SIMEX Bangladesh played a critical role in the early development phase of Payra Port by constructing the essential Service Jetty Infrastructure. This jetty served as the logistical backbone for global EPC giants like Jan De Nul and CRCC, enabling the unloading of heavy machinery, dredging pipes, and construction materials. Beyond just construction, our team provided extensive marine support, including steel pipe fabrication and jointing works, ensuring seamless operations for the port's massive dredging and land reclamation

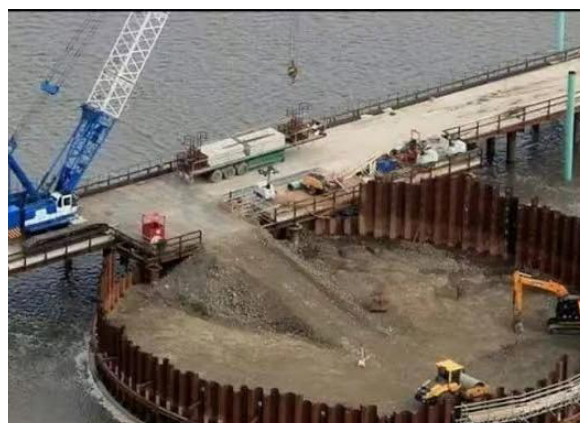
## Key Project Scope:

- » **Jetty Construction:** Engineering and construction of the steel and concrete jetty structure used for heavy cargo handling.
- » **Marine Logistics Support:** Facilitating the mobilization of heavy equipment and materials for the main port project.
- » **Steel Fabrication Works:** Fabrication of steel structures and specialized pipe jointing for the dredging lines.

Client:

 JAN DE NUL

   
中国铁建 CCECC



## Project Scope:

- Service Jetty Construction.
- Dredging Pipe Jointing & Fabrication.
- Marine Logistics Infrastructure.

## Client:

Jan De Nul (Belgium)  
CRCC-CCECC

## Location:

Payra Port, Patuakhali

# Cast-in-Situ Pile Construction

Deep Foundations for Structurally Sound Infrastructure.

SIMEX Bangladesh provides specialized Cast-in-Situ (Bored) Pile construction services for deep foundation works. This method involves drilling a borehole into the ground, lowering a steel reinforcement cage, and then filling it with concrete. Ideal for heavy structures and soil conditions where driven piles are not suitable, our experienced team and modern drilling rigs ensure high-capacity foundations with minimal vibration and ground disturbance.

## Key Advantages:



**High Load Capacity:** Suitable for supporting heavy vertical loads from large buildings and bridges, even in challenging soil conditions.



**Low Vibration & Noise:** Minimal ground vibration and noise pollution during installation, making it ideal for urban areas and near existing structures.



**Depth Flexibility:** Capable of reaching significant depths to find stable bearing strata, regardless of the groundwater level.



**Versatility in Soil:** Can be installed in various soil types, including stiff clay, dense sand, and even through soft rock formations.

## Our Expertise & Services:

- **Bored Pile Installation**
  - » Rotary drilling for various pile diameters
  - » Installation using temporary casing
  - » Drilling under bentonite slurry for hole stability
- **Pile Testing & Quality Control**
  - » Pile Integrity Testing (PIT) to check for defects
  - » Static Load Testing for bearing capacity verification
  - » Concrete quality assurance
- **Reinforcement & Concreting**
  - » Fabrication and lowering of reinforcing steel cages
  - » Tremie pipe method for underwater concreting
- **Specialized Piling Solutions**
  - » Contiguous bored pile walls for deep excavations
  - » Secant pile walls for watertight cut-offs





# CAST-IN-SITU BORED PILE CONSTRUCTION

Jholshiri Abashon Project (Bangladesh Army)

Client:



## - Bangladesh Army

Working Partner: ATLAS CONSTRUCTION

### Project Overview:

SIMEX Bangladesh is honored to serve as a construction partner for the prestigious Jholshiri Abashon Project under the Bangladesh Army. We were entrusted with the execution of critical Cast-in-Situ Pile Construction works. Demonstrating our reliability and technical compliance, SIMEX has successfully completed the initial phase of 48 piles. Based on this performance, we are currently executing the second phase, targeting a total of 142 heavy-duty bored piles, ensuring a solid foundation for this national priority development.



### Key Project Scope:

- » **Cast-in-Situ Piling:** Execution of 142 Nos. deep bored piles for residential infrastructure foundation.
- » **Phased Execution:** Successfully delivered Phase-1 (48 Piles) and currently mobilizing for the remaining volume.
- » **Quality Compliance:** Strict adherence to Bangladesh Army's rigorous engineering standards and safety protocols.

### Project Scope:

- Cast-in-Situ Bored Piling (Total 142 Nos).
- Access Foundation Works.
- Reinforced Concrete Shore Protection.

### Client:

Bangladesh Army.

### Working Partner:

ATLAS CONSTRUCTION

### Location:

Jholshiri, Dhaka, Bangladesh.

# PIPELINE & UTILITY INFRASTRUCTURE

Seamless Connectivity for Critical Utilities

SIMEX provides end-to-end solutions for underground and surface pipeline networks. From industrial process piping to large-scale water transmission lines, our specialized teams handle excavation, pipe laying, jointing, and testing with extreme precision. We utilize advanced welding and jointing technologies to ensure leak-proof, durable systems capable of withstanding high pressures and corrosive environments.

## Key Advantages:



**Leak-Proof Integrity:** Rigorous pressure testing and X-ray inspection of joints.



**Diverse Materials:** Expertise in MS, HDPE, Ductile Iron, and Concrete pipes.



**Advanced Machinery:** Owned excavators and side-booms for safe pipe handling.



**Rapid Installation:** Parallel trenching and laying operations to minimize downtime.

## Our Expertise & Services:

- **PHC Piles (Spun Piles)**
  - » High-strength pre-tensioned spun piles (400mm - 800mm dia).
  - » Designed for deep foundation support in bridges and high-rises.
- **Hollow & Solid Blocks**
  - » Eco-friendly, load-bearing concrete blocks for boundary walls.
  - » Thermal insulation properties for energy-efficient buildings.
- **Drainage Systems**
  - » Precast RCC pipes (NP3/NP4 class) for heavy-duty drainage.
- **Paver Blocks & Curbs**
  - » Heavy-duty interlocking pavers for industrial yards and port terminals.
  - » Abrasion-resistant surfaces for high-traffic road surfacing.





# PIPELINE & WATER TRANSMISSION INFRASTRUCTURE WORKS

Rajshahi & Gandharbpur Water Treatment Projects

- Shandong Water Conservancy (Dhaka WASA)
- Hunan Construction Engineering Group (Rajshahi WASA)

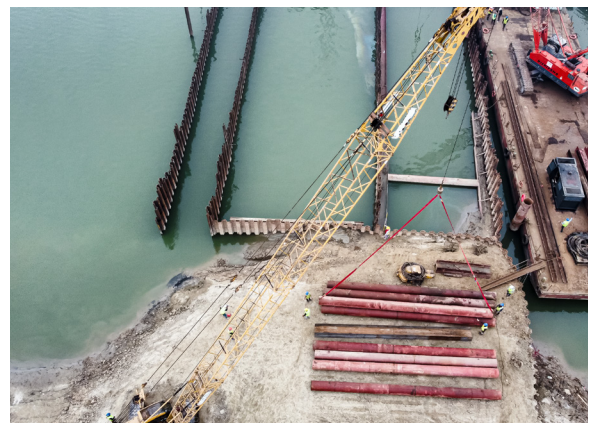
## Project Overview:

SIMEX Bangladesh is proud to be a key partner in the nation's most vital water treatment initiatives. We successfully executed critical infrastructure works for both the **Rajshahi WASA Surface Water Treatment Plant** and the **Gandharbpur Water Treatment Plant (Dhaka WASA)**. Our scope spanned from complex river engineering to massive land development, demonstrating our capacity to manage large-scale utility projects simultaneously across different regions.

## Key Project Scope:

- » **River Intake Engineering (Rajshahi):** Execution of a massive Sheet Pile Cofferdam and deep foundation piling for the river intake structure.
- » **Infrastructure Connectivity (Dhaka):** Construction of a heavy steel bridge and access roads to facilitate logistics for the Gandharbpur plant.
- » **Massive Land Development:** Execution of over 300,000 cum of sand filling and site preparation works for critical plant facilities.

Client:



## Project Scope:

- Sheet Pile Cofferdam & Deep Piling (Rajshahi).
- Steel Bridge & Access Road Construction (Dhaka).

## Client:

Hunan Construction (HCEG) & Shandong Water Conservancy.

## Location:

Rajshahi & Narayanganj, Bangladesh.

# Land Development

Transforming Raw Terrain into Ready-to-Build Assets

SIMEX Bangladesh provides comprehensive land development solutions, transforming raw land into viable construction sites for residential, commercial, and industrial projects. Our services encompass the entire lifecycle of site preparation, from initial clearance and large-scale earthworks to precision grading and essential infrastructure development. Utilizing a vast fleet of heavy machinery and engineering expertise, we ensure a stable, leveled, and accessible foundation for future growth.

## Key Advantages:



**Speed & Scale:** Capable of rapid mobilization with a large fleet of heavy equipment for completing massive earthworks on schedule.



**Soil Stabilization:** Implementation of expert ground improvement techniques to ensure long-term structural stability and load-bearing capacity.



**Cost-Effective Strategies:** Optimized cut-and-fill operations and efficient resource management to minimize overall project development costs.



**Integrated Site Readiness:** Simultaneous preparation of access roads, drainage, and leveling, delivering a fully construction-ready site.

## Our Expertise & Services:

- **Site Preparation & Clearance**
  - » Vegetation clearing and grubbing
  - » Demolition of existing structures
  - » Topsoil stripping and management
- **Earthworks & Grading**
  - » Large-scale cut and fill operations
  - » Precision leveling and contouring
  - » Embankment and dredging works
- **Ground Improvement**
  - » Soil compaction and stabilization techniques
  - » Geotextile application for reinforcement
  - » Sand filling and land reclamation
- **Infrastructure Enabling Works**
  - » Construction of site access roads
  - » Stormwater drainage system installation





# MASSIVE LAND DEVELOPMENT & SITE PREPARATION

Client:



Dhaka WASA Infrastructure Project (Pagla)

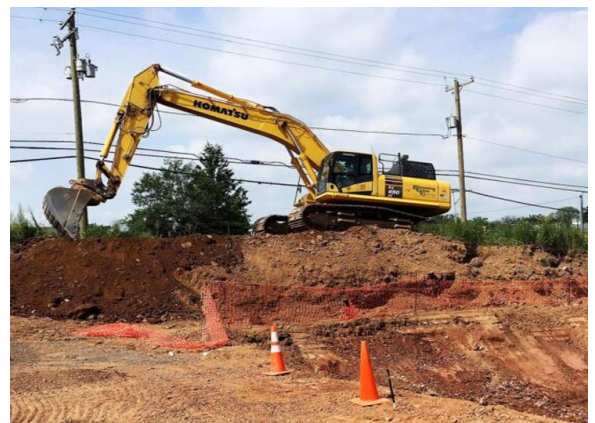
- VA Tech Wabag (India)

## Project Overview:

SIMEX Bangladesh demonstrated exceptional logistical power in this critical infrastructure project for Dhaka WASA, contracted by the Indian multinational VA Tech Wabag. We were tasked with preparing a vast site under an extremely tight deadline. Our team mobilized a massive fleet to execute 300,000 cubic meters of sand filling, transforming low-lying land into a construction-ready zone. Simultaneously, we constructed a fully functional 5,000 sq. ft. site office combining brick, concrete, and a steel roof delivering the entire scope in a record-breaking 45 days.

## Key Project Scope:

- » **Massive Earthworks:** Supply, filling, and compaction of **300,000 SQM** of sand to prepare the project foundation.
- » **Rapid Facility Construction:** Construction of a permanent-quality 5,000 sft office building with a durable steel roof structure.
- » **Logistical Efficiency:** Simultaneous management of heavy earth-moving and civil construction to meet the 1.5-month deadline.



## Project Scope:

- 300,000 cum Sand Filling & Land Development.
- 5,000 sft Brick & Concrete Site Office.
- Completed in 45 Days.

## Client:

VA Tech Wabag (India)

## Location:

Narayanganj (Pagla),  
Bangladesh

# Precast Concrete & Precast Pile

Engineered for Strength, Manufactured for Speed.

SIMEX revolutionizes construction timelines with our dedicated Precast Concrete Division. Operating from our automated factory in Rajbari, we produce high-performance structural elements designed to withstand Bangladesh's unique alluvial soil conditions. By shifting production from the site to a controlled factory environment, we guarantee superior quality, higher curing strength, and rapid installation capability, significantly reducing overall project schedules.

## Key Advantages:



**Speed of Execution:** Installation is 3x faster than traditional Cast-in-Situ methods.



**Quality Control:** Automated batching and steam curing ensure consistent concrete strength.



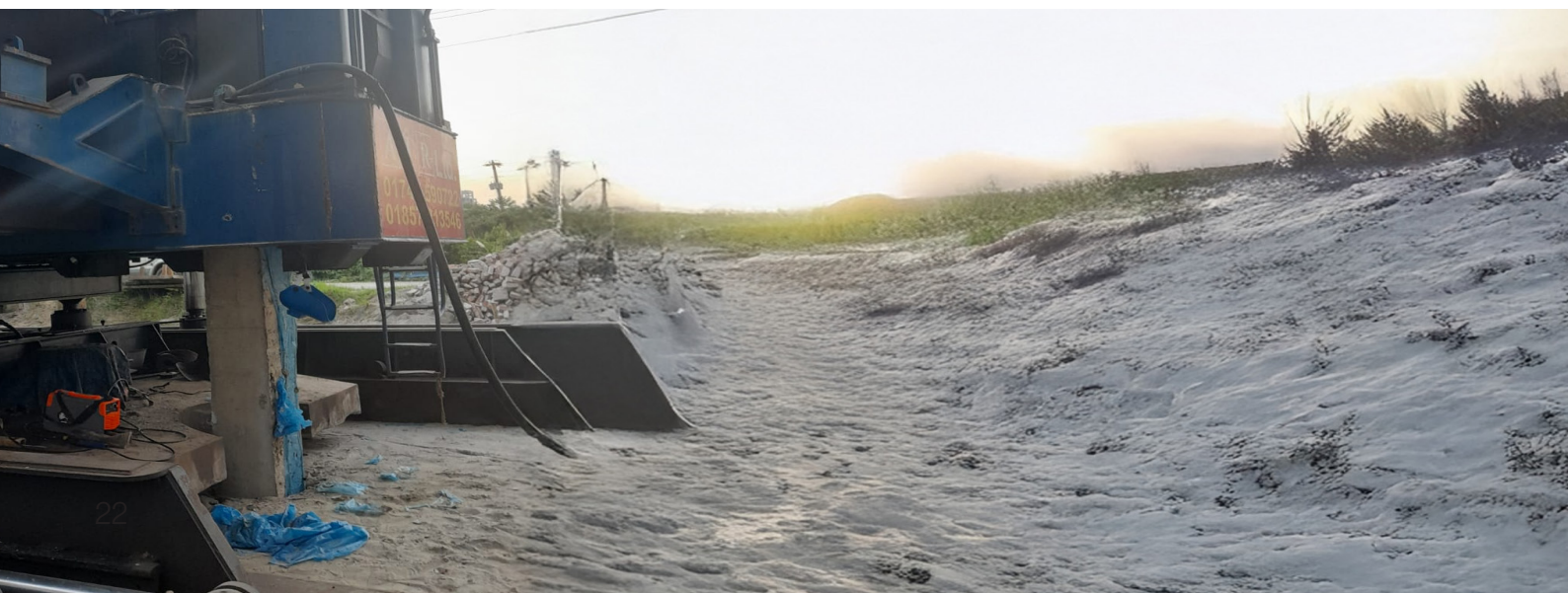
**Cost Efficiency:** Reduces on-site labor and material wastage significantly.



**Durability:** High-density concrete provides superior resistance to saline and corrosive environments.

## Our Expertise & Services:

- **Paver Blocks & Curbs**
  - » High-strength interlocking pavers and curb stones built to withstand heavy industrial traffic.
- **Drainage & Utility Systems**
  - » Heavy-duty RCC pipes (NP3/NP4) and Box Culverts designed for efficient municipal sewerage management.
- **Precast Square Piles**
  - » Durable reinforced concrete square piles, offering a cost-effective foundation for residential structures.
- **Boundary Wall**
  - » Ready-to-install precast wall panels and columns for fast, secure, and aesthetic perimeter fencing.
- **Hollow & Solid Blocks**
  - » Eco-friendly load-bearing blocks offering superior thermal insulation and durability over traditional bricks.
- **PHC Piles (Spun Piles)**
  - » High-strength spun piles (400-800mm) for deep foundation projects, ensuring rapid installation.





# CAST-IN-SITU BORED PILE CONSTRUCTION

Jholshiri Abashon Project (Bangladesh Army)

Client:



## - Sichuan Road and Bridge Group (SRGB)

### Project Overview:

SIMEX Bangladesh played a crucial role in the Azipur Bypass Highway project by deploying our precast concrete capabilities. We were tasked with the mass production and installation of high-strength Concrete Blocks used for the highway's retaining walls and slope protection. Our factory-produced elements ensured uniformity and structural stability, allowing the main contractor to meet critical road opening deadlines without compromising on quality.



### Key Project Scope:

- » **Mass Production:** Supply of thousands of high-strength concrete blocks from our dedicated facility.
- » **Retaining Wall Construction:** Precision installation of block systems to secure highway embankments.
- » **Quality Assurance:** Rigorous testing of every batch to meet RHD (Roads and Highways Department) specifications.



### Project Scope:

- Precast Block Manufacturing & Supply.
- Highway Retaining Wall Construction.

### Client:

Sichuan Road and Bridge Group (SRGB)

### Location:

Gazipur Bypass Highway, Dhaka, Bangladesh.

# Project Logistics & Heavy Haulage

Moving the Immovable: Integrated Supply Chain Solutions for Infrastructure.

SIMEX Bangladesh provides specialized logistics solutions tailored for the demanding needs of the construction and industrial sectors. We go beyond simple transport to manage the complex movement of heavy machinery, oversized structures (ODC), and critical project materials. Our integrated approach covers the entire supply chain—from global sourcing and customs clearance to final site delivery—ensuring essential resources arrive safely and on schedule to keep project timelines on track.

## Key Advantages:



**Heavy Lift Capability:** Specialized fleet and expertise to handle oversized, overweight, and critical project cargo that standard transport cannot move.



**Schedule Certainty:** Meticulous planning, route surveys, and execution to ensure timely delivery, preventing costly construction site delays.



**End-to-End Management:** Seamless handling of the entire process, including international freight forwarding, customs clearance, and inland transportation.

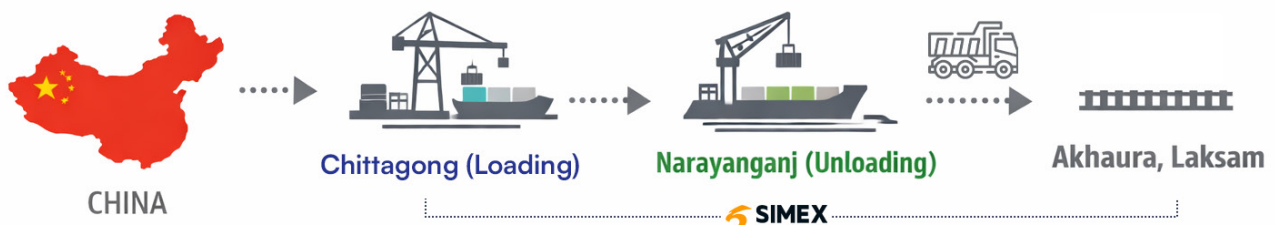


**Risk Mitigation & Safety:** Strict adherence to international safety protocols and transport regulations during loading, transit, and complex offloading operations.

## Our Expertise & Services:

- **Heavy Haulage & Project Cargo**
  - » Transportation of oversized machinery (cranes, piling rigs, excavators)
  - » Movement of long-span bridge girders and large precast concrete elements
- **Freight Forwarding & Transport**
  - » Multimodal transport solutions (Road, River, and Sea)
  - » International freight forwarding for importing construction materials
  - » Inland transportation of bulk materials (steel, cement, aggregates)
- **Site Logistics & Storage Management**
  - » Management of on-site laydown areas and material yards
  - » Coordination of **Just-in-Time (JIT)** deliveries to congested sites

## Project Logistics Flow:





# HEAVY MATERIAL LOGISTICS & SUPPLY CHAIN MANAGEMENT

Akhaura–Laksham Dual Gauge Rail Line

- Well Stone Co., Ltd. (Xiamen)
- Toma Construction & Co.Ltd.

## Project Overview:

Supporting one of Bangladesh's key railway infrastructure upgrades, SIMEX Bangladesh executed a massive logistical operation for the Akhaura-Laksham Rail Project. We were entrusted with the end-to-end supply chain management of 55,000 tons of stone aggregates. Our team coordinated the complex transfer of materials directly from Mother Vessels in Chittagong, managing the unloading, inland transportation, and timely delivery to the railway construction sites. This operation ensured a continuous supply of essential materials, preventing bottlenecks in the rail line expansion.

## Key Project Scope:

- » **Massive Volume Handling:** Management and transport of 55,000 tons of high-grade stone required for railway ballast and construction.
- » **Port-to-Site Logistics:** Seamless coordination of material transfer from Chittagong Mother Vessels to the remote project sites in Akhaura and Laksham.
- » **Supply Chain Efficiency:** ensuring strict delivery timelines were met to match the rapid pace of the railway track installation.



Client:



## Project Scope:

- Supply & Logistics of 55,000 Tons of Stone.
- Mother Vessel to Site Transportation.
- Project Value: ~3.3 Crore BDT.

## Client:

Well Stone Co., Ltd. (Xiamen)

## Location:

Chittagong to Akhaura-Laksham

# FORMWORK SCAFFOLDING DIVISION

Comprehensive Solutions: From Installation Service to Material Supply

At SIMEX, we offer a dual-advantage in scaffolding and formwork. We are not just a construction contractor who installs support systems; we are also a direct supplier with a massive inventory. Whether you require our expert team to execute complex shuttering works for a high-rise project, or simply need to rent high-quality scaffolding materials for your own site, SIMEX provides flexible, cost-effective solutions tailored to your specific needs.

## Key Advantages:



**Safety First:** Certified load-bearing systems that meet international safety standards.



**Surface Finish:** Steel shuttering ensures a smooth, fair-faced concrete finish, reducing plastering costs.



**Versatility:** Adjustable systems suitable for complex geometries and varying heights.



**Inventory Availability:** Large stock available for immediate deployment to multiple sites.

## Our Expertise & Services:

- **Steel Formwork**
  - » Durable panels for columns, beams, walls, and slab casting.
- **Cup-Lock Scaffolding**
  - » Multi-purpose system for staging and access platforms.
- **Heavy Duty Props**
  - » Adjustable steel props for supporting heavy slab loads.
- **Access Scaffolding**
  - » Safe stair towers and working platforms for high-elevation tasks.

## SALES, BUY BACK

"We Sell & Rent" For developers and contractors managing their own labor, we offer immediate supply of high-grade materials with flexible financial models.

- **Equipment Rental:** Rent Cup-lock systems, Steel Props, and Jacks on a monthly basis.
- **Direct Sales:** Purchase brand-new steel formwork and scaffolding directly from our stock.
- **Buy-Back Facility:** Buy from us, use it, and sell it back to us after project completion to save costs.
- **Huge Inventory:** Ready stock available for bulk delivery anywhere in Bangladesh.

### Available Stock:

- Steel Props
- Cup-Lock Systems
- Adjustable Jacks
- Walking Platforms
- Steel Shuttering Panels.





# INDUSTRIAL SCAFFOLDING SUPPLY & CIVIL SUPPORT

Gandharbpur Water Treatment Projects SNC  
ONSHORE

- SUEZ International

## Project Overview:

SIMEX Bangladesh was selected by the French multinational SUEZ to support the critical onshore construction phase of the Gandharbpur Water Treatment Plant. Our role extended beyond traditional contracting; we acted as a key supply partner, providing **high-grade Scaffolding Materials** essential for the plant's massive structural works. This project exemplifies our dual capability to execute civil works while simultaneously managing the logistics and supply of heavy-duty construction support systems.

## Key Project Scope:

- » **Material Supply:** Bulk supply of specialized scaffolding systems to facilitate safe access for high-elevation construction.
- » **Logistics Management:** Timely delivery of materials to the Rupganj site to ensure zero downtime for the main contractor.
- » **Project Value:** Executed a significant supply and support contract valued at BDT 5.15 Crore, demonstrating our financial and operational capacity.

Client:



## Project Scope:

- Scaffolding Material Supply.
- Civil Construction Support.
- Project Value: ~5.15 Crore BDT.

## Client:

SUEZ International

## Location:

Rupganj, Narayanganj

# Landscaping & Site Greening

Integrating Infrastructure with Sustainable Natural Environments.

SIMEX Bangladesh provides comprehensive landscaping solutions that enhance the aesthetic value and environmental functionality of construction projects. We go beyond gardening, focusing on integrating green spaces with built infrastructure. From large-scale site development and hardscaping to environmental restoration and bio-engineering for slope protection, we turn completed construction sites into sustainable, visually appealing, and functional environments.

## Key Advantages:



**Erosion Control & Stability:** Utilizing bio-engineering techniques like vetiver planting to secure slopes and prevent soil erosion effectively.



**Integrated Hardscaping:** Seamlessly blending built elements like walkways, retaining walls, and drainage systems with natural green spaces.



**Environmental Sustainability:** Promoting ecological balance through native species plantation, green buffers, and eco-friendly infrastructure solutions.



**Aesthetic Value Addition:** Transforming raw construction sites into visually appealing, finished landscapes that significantly enhance project value.

## Our Expertise & Services:

- **Softscaping & Plantation Works**
  - » Large-scale tree and shrub plantation for industrial and commercial zones
  - » Grass turfing, sodding, and hydroseeding for immediate ground cover
  - » Slope protection and stabilization using bio-engineering (e.g., Vetiver grass)
- **Hardscaping & Civil Elements**
  - » Construction of walkways, driveways, plazas, and decorative pavements using pavers or concrete
  - » Aesthetic retaining walls, planter boxes, kerb stones, and edging works
  - » Installation of water features, fountains, and site furniture (benches, lighting bases)





# EARTHWORKS & INDUSTRIAL LANDSCAPING

RNPL–Norinco Power Plant, Payra Port

- TEPC (Tianjin Electric Power Construction Co. Ltd.)

Client:



## Project Overview:

SIMEX Bangladesh contributed significantly to the environmental and structural development of the Payra Port zone. Contracted by TEPC, we executed a comprehensive **Land Development and Landscaping** project covering a vast area of **3,00,000 SQM**. Our team managed extensive earth-moving operations to stabilize the coastal terrain, followed by a massive plantation initiative. This project transformed the raw construction site into a sustainable green zone, preventing soil erosion and enhancing the port's long-term durability.



## Key Project Scope:

- » **Large-Scale Development:** Execution of land development and landscaping across a 3,00,000 SQM area.
- » **Massive Plantation Drive:** Supply and plantation of over 200,000 trees, consisting of salt-tolerant species to protect the coastal soil.
- » **Site Development:** Execution of earthworks, leveling, and soil improvement to prepare the ground for infrastructure and greening.



### Project Scope:

- Earth Moving & Site Leveling (3,00,000 SQM).
- Plantation of 200,000+ Trees.
- Green Zone Development (Hard & Soft Scaping).

### Client:

TEPC (Tianjin Electric Power Construction Co. Ltd.)

### Location:

Payra Port, Patuakhali

# Ongoing Projects

## Rajshahi WASA Water Treatment Plant - Cofferdam Construction (3,500 Ton Steel)

Client: Hunan Construction Engineering Group



## Payra Port Development – Earth Moving & Landscaping (4,000 sq.m Green Area + 200,000 Trees)

Client: Hunan Construction Engineering Group



## DS-10 Project, Dhaka-Sylhet Highway Corridor Project

Client: China Railway First Bureau Group Co., Ltd.



Meny more...

# Completed Project



### Dhaka Airport Project

ADC (Samsung, Korea)

Sheet Pile Rental, Driving & Fabrication



### Office Building, Bashundhara L Block, Dhaka

Data Path Group

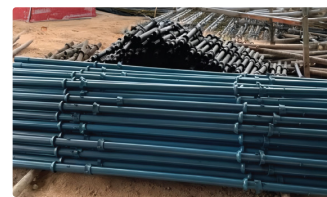
4-Story Steel Structure (40,000 sft), Full Construction in 90 Days



### Payra Port

Jan De Nul (Belgium)

Jetty Construction, Steel Fabrication, Pipe Jointing etc.



### Gandharbpur Water Treatment SNC Onshore

SUEZ Int. & OTV-VEOLIE (France)

Scaffolding & Civil Support Works



### Dhaka Metro Rail Project, Uttara

SINOHYDRO

Sheet Pile Driving & Fabrication



### Gazipur Bypass Highway

SRBG

Block Manufacturing & Retaining Wall Construction



### Padma Bridge Project

MBEC5

Steel Casing Pipe Fabrication



### Gandharbpur Water Project (Dhaka WASA)

Shandong Water Conservancy

Steel Bridge & Road Construction



### High Tech Park-Bangladesh

L&T (India)

Steel Supply



### Dhaka WASA Project (Pagla)

VA Tech Wabag (India)

300,000 m³ Sand Filling



### Apex Holding Ltd., Gazipur

Apex Textile Printing Mills Limited.

24m High Mat Foundation & Double-Height RCC Building (~3,000 sft/floor)



### Jholshiri Army Project

Bangladesh Army

Cast-in-Situ Pile Construction

Over 40 Projects Successfully Delivered in Last 7 Years

# OUR CERTIFICATIONS

## Barishal Power Plant

- Power China Harbour

Project Type: 300 Square Meter Jetty

SIMEX Bangladesh completed a 3.43 Crore temporary steel jetty project for the Barisal Power Plant under Power China Harbor on August 8, 2019.



## Barishal Power Plant

- Power China Harbour

Project Type: 300 Square Meter Jetty

SIMEX constructed a 360 sq. meter temporary steel jetty using sheet piles and beams for the Barisal Coal-Fired Power Plant. Executed under the supervision of Power China Harbor, the project (Reclamation Wharf & Auxiliary Facility) was completed following all guidelines with a budget of BDT 3.83 Crore.



## Payra Port

- CRCC Harbour & Channel Engineering Bureau Group

Project Type: 552 Square Meter Temporary

SIMEX successfully delivered a 522 sq. meter temporary jetty at Payra Port, Patuakhali, under the supervision of the CRCC Harbour & Channel Engineering Bureau Group. As part of this BDT 3.86 Crore project, SIMEX supplied 280 tons of sheet piles and completed the construction as a remarkable achievement for the company.

Meny more...



# Power Engineering

## Transmission & Transformation

Delivering end-to-end electrical infrastructure solutions. From high-voltage transmission lines to substation commissioning, we ensure reliable power distribution for national and industrial grids.

## Core Power Solutions



### SUBSTATION ENGINEERING

Turnkey construction of electrical substations and transformer bays.



### SOLAR POWER PLANT

Renewable energy infrastructure and solar grid integration.



### URBAN & ROAD LIGHTING

Smart city illumination and highway lighting projects.



### NETWORK TOWER STATION

Specialized contracting for industrial thermal regulation and HVAC systems.



### PILE ENGINEERING

Specialized foundation piling for heavy towers and plants.



### TRANSMISSION & DISTRIBUTION TOWER

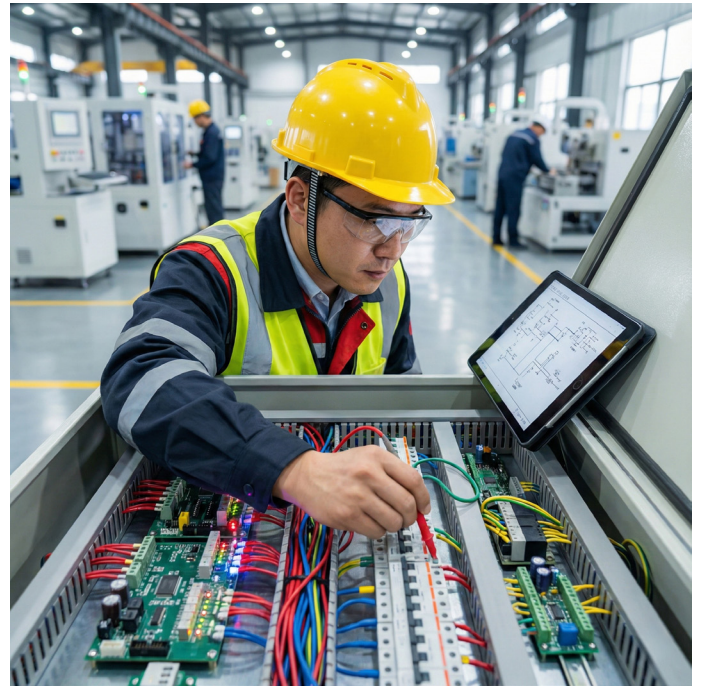
High-voltage tower erection and grid distribution engineering.

# PLC & AUTOMATION

## Control System Installation

We provide state-of-the-art Programmable Logic Controller (PLC) programming and cabinet engineering. Our systems ensure seamless automation for industrial plants, power stations, and manufacturing facilities.

- » System Diagnostics & Commissioning
- » Industrial Control Cabinets
- » Remote Monitoring Integration



### LARGE SCALE FACTORY DISTRIBUTION

Comprehensive industrial power grid setup and heavy-load distribution.



### RESIDENTIAL POWER SUPPLY

Safe and efficient electrification of residential complexes and lines.



### INSTALLATION & DEBUGGING

Professional testing, commissioning, and debugging of electrical systems.



### DISTRIBUTION & CONTROL CABINETS

Supply of high-grade industrial distribution cabinets, switchgear, and panels.



### HIGH & LOW VOLTAGE SETS

Complete high and low voltage switchgear sets for industrial safety.



### VARIOUS TRANSFORMERS

High-performance oil-immersed and dry-type power transformers.

# STEEL MATERIAL SUPPLY & TRADING

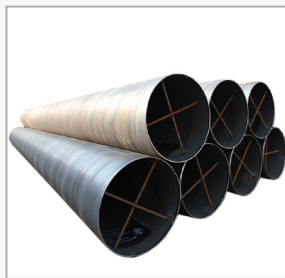
Manufacturer, Importer & Trusted Partner

SIMEX Bangladesh creates value beyond construction by operating as a premier **Supplier and Importer of Steel & Scaffolding materials**. We support fellow developers and industrial clients by providing high-quality construction materials at competitive prices. Whether you need raw structural steel for fabrication or safety scaffolding for a high-rise, SIMEX offers flexible solutions including **Sale, Rental, and a unique Buy-Back facility**, ensuring you only pay for what you utilize.

## Product List (Imported Items)



STEEL SHEET PILES  
(U-TYPE)



STEEL PIPES  
FOR PILING & DREDGING



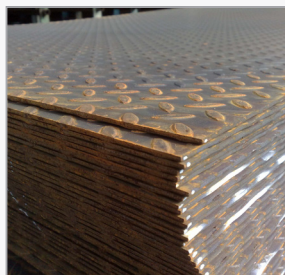
I-BEAMS  
(WIDE FLANGE)



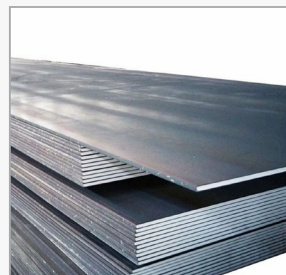
H-BEAMS  
(WIDE FLANGE)



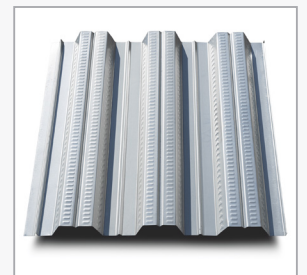
STEEL CHANNELS &  
ANGLES



CHEQUERED  
PLATES



MS PLATES

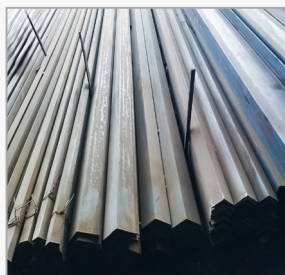


DECK SHEET

## Refurbished Steel - Form Ship Breaking Yard



PRIME QUALITY STEEL  
BILLET



ANGLE



BEAM



PIPE



# MS & GI PIPE

## Supply & Technical Specifications

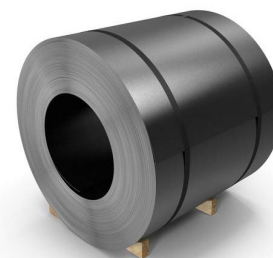
SIMEX Bangladesh supplies high-quality Mild Steel (MS) and Galvanized Iron (GI) Pipes sourced from internationally reputed manufacturers. All pipes are produced in compliance with recognized global standards to ensure durability, structural integrity, and long-term performance across industrial, marine, and infrastructure applications.

General purpose mild steel tubes are manufactured in accordance with BS-1387 and BDS-1031 standards. Galvanization is carried out as per BS-729, equivalent to DIN-2444 and IS-4736, ensuring corrosion resistance and extended service life.

## MAIN MATERIAL PERFORMANCE INDEX

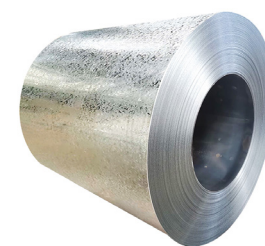
### HOT ROLLED STEEL COILS:

- Grade: JIS G 3132 SPHT-1 / SPHT-2
- Specification: Uncoiled / Pickled, Non-Skin Passed, Mill Edge
- Origin: India, Taiwan, China



### ZINC COATING STANDARD:

- LME Registered Zinc Ingot – 99.995% Minimum Purity
- Origin: Australia / Japan
- Coating Standard: BS-729 / DIN-2444 / IS-4736



## PRODUCTION & TECHNICAL FEATURES

- Installed Production Capacity: 6,000 MT per Month
- Production Range: ½" to 12" Nominal Bore Diameter
- Galvanizing Capacity: Up to 3,000 MT per Month
- Manufacturing Process: High Frequency Electric Resistance Welding (ERW)
- Galvanizing Method: Hot Dip Galvanizing as per ISO 1461 / BS-729
- Pipe Length: Standard and customized lengths available as per project requirement
- End Finish: GI Pipes: Threaded & Bevel Ended (BS-21 Pipe Thread)
- MS Pipes: Plain Ended or Bevelled



## CHEMICAL & MECHANICAL PROPERTIES



Chemical Composition		Mechanical Properties	
Specification	Value	Specification	Minimum Value
Carbon	0.10	Tensile Strength	46,900 PSI (33.0 kg/mm <sup>2</sup> )
Phosphorus	0.55	Yield Strength	33,000 PSI (23.0 kg/mm <sup>2</sup> )
Sulphur	0.06	Elongation (2" Gauge)	24%

## Dimension of Mild Steel (MS) & Galvanized Iron (GI) Pipe (BS 1387/BDS 1031 & BS 729)

SL. No.	Pipe size	MS Pipe	GI Pipe	Outer Diameter (mm)	
		Thickness	Thickness	Min	Max
01	1/2" Silver	1.50	1.50	20.30	20.50
02	1/2" Gold	2.00	2.00	20.50	21.00
03	1/2" Diamond	2.35	2.35	20.50	21.00
04	1/2" Ruby	2.65	2.65	20.50	21.00
05	3/4" Silver	1.50	1.50	26.00	26.50
06	3/4" Gold	2.00	2.00	26.40	26.70
07	3/4" Diamond	2.35	2.35	26.40	26.70
08	3/4" Ruby	2.65	2.65	26.40	26.70
09	1" Silver	1.50	1.50	32.00	32.50
10	1" Gold	2.35	2.35	32.50	33.00
11	1" Diamond	2.65	2.65	32.50	33.00
12	1" Ruby	2.90	2.90	32.50	33.00
13	1" Special	3.25	3.25	32.50	33.00
14	1" Special	3.65	3.65	32.50	33.00
15	1 1/4" Silver	1.60	1.60	41.00	41.50
16	1 1/4" Gold	2.35	2.35	41.50	42.00
17	1 1/4" Diamond	2.65	2.65	41.50	42.00
18	1 1/4" Ruby	2.90	2.90	41.50	42.00
19	1 1/4" Special	4.00	4.00	41.50	42.00
20	1 1/2" Silver	1.60	1.60	47.00	47.50
21	1 1/2" Gold	2.65	2.65	47.50	48.00
22	1 1/2" Diamond	2.90	2.90	47.50	48.00
23	1 1/2" Ruby	3.25	3.25	47.50	48.00
24	1 1/2" Special	3.65	3.65	47.50	48.00
25	1 1/2" Special	4.00	4.00	47.50	48.00
26	2" Silver	1.60	1.60	58.50	59.00
27	2" Gold	2.65	2.65	59.00	60.00
28	2" Diamond	2.90	2.90	59.00	60.00
29	2" Ruby	3.25	3.25	59.00	60.00
30	2" Special	3.65	3.65	59.00	60.00
31	2" Special	4.00	4.00	59.00	60.00

SL. No.	Pipe size	MS Pipe	GI Pipe	Outer Diameter (mm)	
		Thickness	Thickness	Min	Max
32	2 1/2" Silver	2.00	2.00	74.00	75.00
33	2 1/2" Gold	2.90	2.90	75.00	75.50
34	2 1/2" Diamond	3.25	3.25	75.00	75.50
35	2 1/2" Special	3.65	3.65	75.00	75.50
36	2 1/2" Ruby	4.00	4.00	75.00	75.50
37	3" Silver	2.00	2.00	88.00	89.00
38	3" Gold	2.90	2.90	88.50	89.50
39	3" Diamond	3.25	3.25	88.50	89.50
40	3" Ruby	3.65	3.65	88.50	89.50
41	3" special	4.0	4.0	88.50	89.50
42	4" Silver	2.00	2.00	112.00	112.50
43	4" Heavy	2.65	2.65	112.50	113.00
44	4" Star	3.00	3.00	112.50	113.00
45	4" Gold	3.65	3.65	112.50	113.00
46	4" Diamond	4.00	4.00	112.50	113.00
47	4" Special	4.50	4.50	112.50	113.00
48	4" Special	5.00	5.00	112.50	113.00
49	5" Silver	3.00	3.00	138.00	139.00
50	5" Gold	4.00	4.00	138.00	139.00
51	5" Diamond	4.85	4.85	138.00	139.00
52	6" Silver	3.00	3.00	163.00	165.00
53	6" Gold	4.00	4.00	164.50	165.50
54	6" Diamond	4.85	4.85	164.50	165.50
55	6" Special	5.00	5.00	164.50	165.50
56	8" Gold	5.00	5.00	218.00	220.00
57	8" Special	6.00	6.00	218.00	220.00
58	8" Diamond	8.00	8.00	218.00	220.00
59	10" Silver	5.00	5.00	272.00	273.00
60	10" Gold	6.00	6.00	272.00	273.00
61	10" Diamond	8.00	8.00	272.00	273.00
62	12" Silver	5.00	5.00	322.00	324.00
63	12" Gold	6.00	6.00	322.00	324.00
64	12" Diamond	8.00	8.00	322.00	324.00

# SIMEX OWNED EQUIPMENT FLEET

Driving Project Efficiency with Modern Machinery. Fully Owned, Fully Independent.

At SIMEX, reliability comes from full ownership. **We own 100% of our heavy equipment**, so it is always ready and we do not depend on rentals. Our own mechanical team quickly fixes any issues, and we keep backup units ready to ensure smooth and uninterrupted project work.



**ICE 815C Hammer**



**Tower Crane**

• Brand: Zoomlion • Model: WA6015-8A



**90Ton Crawler Crane**

• Brand: SANY • Model: SCC900E



**80-M ton Crawler Crane**  
• Model: SC800-2 • Brand: SUMITOMO



**60 Ton Rough Terrain Tractor Crane**  
• COO: China • Brand: XCMG



**55 Ton Crawler Crane**  
• Model: SCC550A • Brand: SANY



**55 Ton Crawler Crane**  
• Model: SCC550E • Brand: SANY



**35 Ton Rough Terrain Crane**  
• Model: RT35 • Brand: XCMG



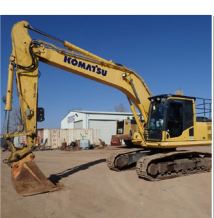
**25 Ton Rough Terrain Crane**  
• Model: RT25 • Brand: XCMG



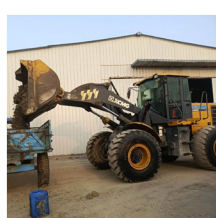
**90 Electric Hammer**  
• Model: DZP-90KW • Brand: Zhenzhong



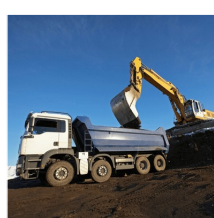
**60 Electric Hammer**  
• Model: YNZX60-6W • Brand: Yonggan Machinery



**Excavator Machine**  
• Model: PC 200 • Brand: Komatsu



**Wheel Loader**



**Dump Truck**



**400kVA Generator**  
• Model: MGC400s • Brand: McWel



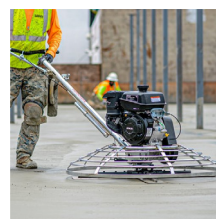
**375kVA Generator**  
• Model: HDV375-S • Brand: HUA DONG



**250kVA Generator**  
• Model: HDV250s • Brand: Huadong



**Floating Barge**  
150 ft x 36 ft x 07 ft



**Power Trowel Machine**  
Model: 100



**Batching Plant**  
60 m³/hour



**Mobile Welding Setup**

# EQUIPMENT MANAGEMENT & RENTAL

Unlimited Capacity Through Strategic Alliances

Beyond our owned fleet, SIMEX operates a robust Equipment Management Division. Leveraging long-standing relationships with key industry stakeholders and strategic partners, we have the capacity to mobilize specialized machinery for any scale of operation. Whether from our own reserve or through our trusted corporate network, we ensure our clients have access to the right tools at the right time.



**PHC Pile Hammer**



**Hydraulic Rotary Drilling Rig  
(Large Dia)**



**Excavator Mounted Vibro Hammer**



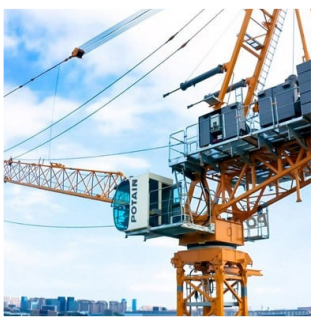
**Aerial Man Lift**



**Boom Pump  
(Concrete)**



**Dump Truck  
(Ten-Wheeler)**



**Tower Crane**



**Forklift  
(5T - 10T)**



**Portable Air Compressor**



**Hydraulic Impact Hammer**

# MODULAR CONTAINER HOUSING

Transforming high-grade ISO shipping containers into sophisticated, rapid-deploy modular structures for any terrain.

## AVAILABLE UNIT DIMENSIONS



**20FT STANDARD CONTAINER**

20' x 8' x 8.6'  
Area: 160 Sqft



**40FT LARGE CONTAINER**

40' x 8' x 8.6'  
Area: 320 Sqft

## SECTOR OF APPLICATIONS



**MODULAR HOUSING**  
CUSTOM BUILD



**EXECUTIVE OFFICE**  
CUSTOM BUILD



**DINING & CAFE**  
CUSTOM BUILD



**SANITARY BLOCK**  
CUSTOM BUILD



**EQUIPMENT STORE**  
CUSTOM BUILD



**TECHNICAL LAB**  
CUSTOM BUILD

## SHIPPING CONTAINER SPECIFICATIONS

Container Type	Container Weight (kg)			Interior Measurement (m)				Exterior Measurement (m)			Door Open (m)	
	Gross	Tare	Net	Length	Width	Height	Capacity	Length	Width	Height	Width	Height
40 ft Standard	30,480	3,750	26,730	12.032	2.352	2.394	67.7 m³	12.192	2.438	2.591	2.340	2.280
20 ft Standard	24,000	2,200	21,800	5.898	2.352	2.394	33.2 m³	6.058	2.438	2.591	2.340	2.280

*Note: All measurements and weights are approximate and may vary slightly depending on manufacturer specifications and production standards.*

# Smart Container & Site Solutions

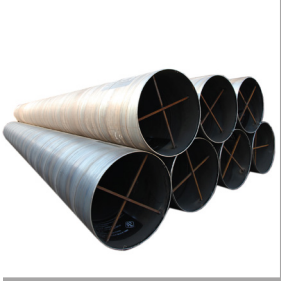
SIMEX Bangladesh provides versatile container solutions designed for rapid site mobilization and efficient project management. Our fleet includes fully equipped site offices, comfortable labor accommodation, and secure material storage units. These durable, weather-resistant, and easily transportable containers ensure that your project team can establish a functional workspace immediately, even in remote or challenging environments.



# Steel Fabrication Factory

Precision Engineering & Heavy Structural Manufacturing.

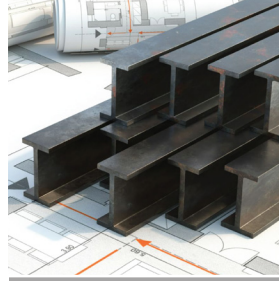
SIMEX Bangladesh operates a modern steel fabrication facility capable of manufacturing heavy structural components with precision and strict quality control. Our in-house capability ensures timely delivery and reliable performance for industrial and infrastructure projects.



Casing Pipe



Scaffolding



Beams



Ring Scaffolding

# Precast Concrete Factory

Accelerating Construction with Modular Quality.

SIMEX Bangladesh operates its own dedicated precast concrete factory, producing high-strength structural elements under strict quality control. Our in-house manufacturing ensures consistent quality, faster delivery, and reliable supply for large-scale infrastructure and industrial projects.



Blocks



Paver Block



Precast Pile



RCC Pipe



SIMEX Precast Concrete Factory

# Contact Information

Connect With Us



## Head Office

---

- 📍 302, Lane: 04, Baridhara DOHS, Dhaka-1206, Bangladesh.
- ☎ +88 017 3333 1042
- ✉ projects@simex.com.bd
- 🌐 www.simex.com.bd

## Registered Office

---

- 36, Kemal Ataturk Avenue Banani C/A Dhaka.
- Tel: (+88) 09666777800

## General Inquiries

---

### Commercial Department

Mobile: +88 017 3333 1033  
Email: shuvo@simex.com.bd

### Engineering Department

Mobile: +88 017 3333 1032  
Email: jamil@simex.com.bd

## Bank Partner

---





10th Nov, 2025 / Rajshahi WASA Water Treatment Plant - SIMEX Bangladesh

+88 017 3333 1042

projects@simex.com.bd

www.simex.com.bd

302, Lane: 04, Baridhara DOHS,  
Dhaka-1206, Bangladesh.

