



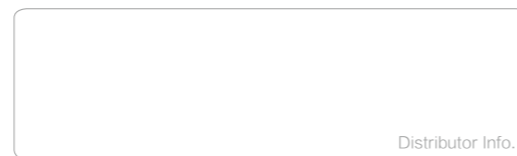
## SANY CONCRETE BATCHING PLANT



### SANY HEAVY INDUSTRY CO., LTD.

SANY Industry Town, Changsha Economic and Technological  
Development Zone, Hunan Province, China  
Service Line: +86 4006 098 318  
E-mail: [crd@sany.com.cn](mailto:crd@sany.com.cn)

[www.sanygroup.com](http://www.sanygroup.com)



Distributor Info.

Due to our process of continuous innovation, materials and specifications are subject to change without notice.

© Printed in China File No.: 59010962 Date: Apr.2019

[www.sanygroup.com](http://www.sanygroup.com)

# F8

**FAST MOUNTED  
CONCRETE BATCHING PLANT**



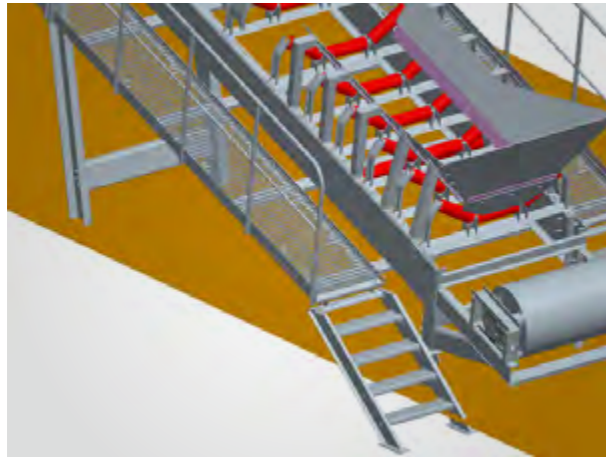
# 01 FAST MOUNTED

## Build and put into operation Rapidly. Easy to Maintain and Move

Break away from the traditional welded mode of most concrete batching plants and enjoy our modular design. It is quick and convenient to install, easy to maintain and move. The compact footprint and flexibility will meet the requirements of the more complex work sites.

### Designed for Rapid and Convenient Installation

- New control room, designed to be rapidly relocated.
- Modular design of the inclined belt makes it easy to assemble, disassemble and transport. The support uses the open "U" end face and truss structure, thus the belt is simple and quick to install or replace. The toughened rollers effectively solve problems of deviation and adjustment.
- The access steps and walkway are made of galvanized grid plate.



**F8**  
FAST MOUNTED

- The batching station utilizes a new structure with a feeding height that is 200mm lower than that of the C6. This increases the speed and efficiency of the loader, thus saving energy and fuel consumption.
- The storage silos use a floor type structure. Installed on the ground and easily built on site using common hardware.

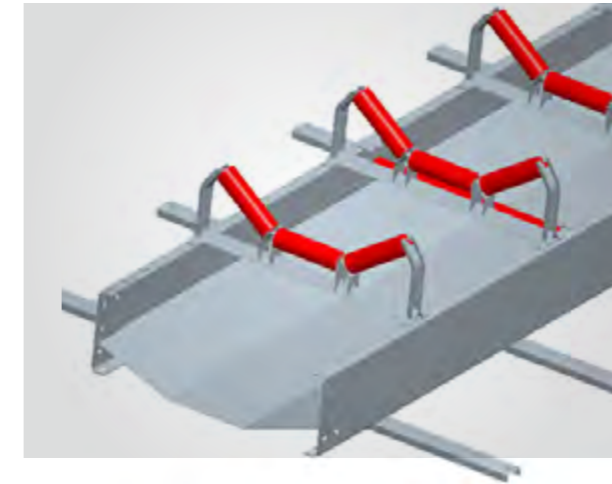


## General components Convenient maintenance

- Mass produced parts allows interchangeability and convenient maintenance.

## Flexible to disassemble & assemble Convenient to move

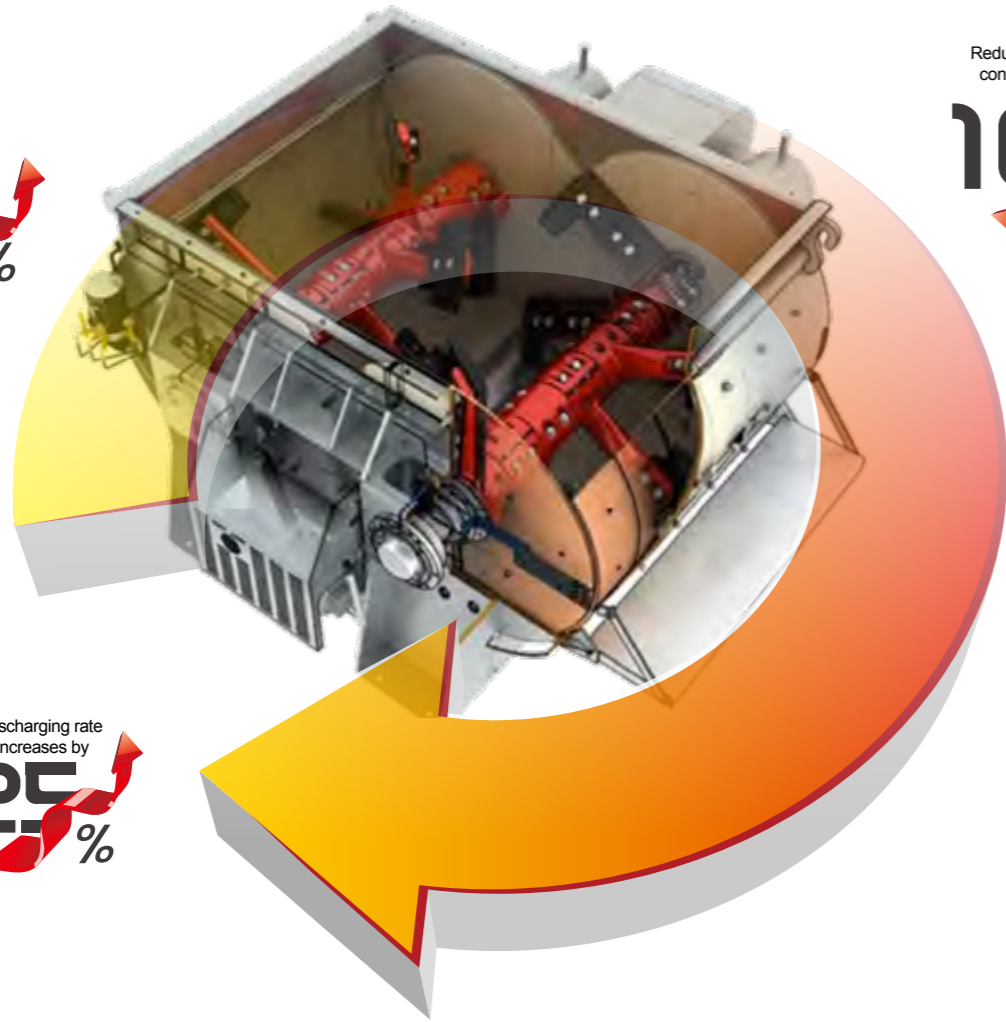
- The new F8 concrete batching plant adopts a modular structure that can be assembled and disassembled rapidly using common hardware. This makes it convenient to move.



Increase efficiency  
**10%**

Reduce energy consumption  
**10%**

Discharging rate increases by  
**25%**



## 02 ENERGY SAVING

- To improve mixing efficiency, the discharge ports of the aggregate silo and powder hopper are arranged in the middle of the mixer.
- Production tasks intelligently queue in such a way as to achieve continuous production, improving efficiency by 10%.
- The self adapting control integrates environmental protection and leak reduction to increase the discharge rate by 25%.
- Intelligent production process control reduces energy consumption by 10%.
- To prevent binding associated with material buildup, Sany intelligent cleaning allows cleaning without the need for shutting down the machine periodically. This enhances output and reduces the maintenance workload.



## 03 INTELLIGENT CONTROL

- The fault diagnostic system displays diagnostic messages in real time and displays reminders for maintenance based on operating conditions.
- The system can be remotely upgraded to ensure the latest functions are available.



# 04 ENVIRONMENTAL PROTECTION

- The enclosed feed design significantly reduces environmental impact.
- Patented pressure relieving technology for the powder silo effectively collects dust and eliminates the need for roof access.
- The optional waste water and waste materials system recycles these valuable materials.



Maintenance Cover

# 05 EASY MAINTENANCE

- The overhaul cover plates and suspension points of the mixer permit convenient maintenance access and component replacement.
- The hopper cover plate design provides unprecedented convenience for liner examination and replacement.
- The powder hopper has a patented overhaul cap that solves the problem of breather pipe blockage.
- The mixer cover is designed with caking prevention features and is configured with multiple manholes for convenient cleaning.

# V8

## Small & Flexible

- Small footprint requires less site space
- Enter and exit on both sides. Flexible layout allows setup on any site

## Convenient & Fast

- Modular design allows an installation time of only 4 days
- Major components can be quickly and easily relocated

## Low Cost

- Lower initial investment for quicker profits
- Lower aggregate capacity for lower energy consumption
- Lower loader fuel consumption results lower operating costs

## Stable & Reliable

- 6 step protection system ensures safety during operation
- Ethernet connections for fast and reliable communications
- Computer controlled manufacturing process



# TECHNICAL SPECIFICATIONS

## F8 FAST MONTNTED TYPE CONCRETE BATCHING PLANT

Model	F8			
	HZS60F	HZS90F8	HZS120F8	HZS180F8
Theoretical	60 m³/h	90 m³/h	120 m³/h	180 m³/h
Motor Power	2×18.5 kW	2×30 kW	2×37 kW	2×55 kW
Nominal Capacity of Mixer	1000 L	1500 L	2000 L	3000 L
Max. Aggregate Size	Ø 60 mm	Ø80 mm	Ø80 mm	Ø80 mm
Silo Capacity	2×50 t	3×100 t	4×200 t	4×200 t
Aggregate Capacity	3×10 m³	3×17 m³	4×17 m³	4×25 m³
Category of Aggregate	3	3	4	4
Material Discharging Height	≥3.8 m	≥3.8 m	≥3.8 m	≥3.8 m
Rated Power	100 kW	190 kW	210 kW	250 kW
Accuracy of Aggregate	±2%	±2%	±2%	±2%
Accuracy of Cement	±1%	±1%	±1%	±1%
Accuracy of Fly Ash	±1%	±1%	±1%	±1%
Accuracy of Water	±1%	±1%	±1%	±1%
Accuracy of Addtive	±1%	±1%	±1%	±1%
Reference Weight	40 t	68 t	93 t	101 t
Feeding Mode	Bucket    Conveyor	Conveyor	Conveyor	Conveyor
Power Standard	380V / 50Hz	380V / 50Hz	380V / 50Hz	380V / 50Hz

## V8 CONCRETE MIXING PLANT

Model	V8		
	HZS30V8	HZS60V8	HZS90V8
Theoretical	26m³/h	50m³/h	75m³/h
Motor Power	18.5kW	2×18.5kW	2×30kW
Nominal Capacity of Mixer	500L	1000L	1500L
Max. Aggregate Size	Ø60mm	Ø60mm	Ø80mm
Silo Capacity	1×50t	2×50t	2×100t
Aggregate Capacity	3×7m³	3×9m³	3×10m³
Category of Aggregate	3	3	3
Material Discharging Height	≥3.8m	≥3.8m	≥3.8m
Rated Power	52kW	87kW	135kW
Accuracy of Aggregate	±2%	±2%	±2%
Accuracy of Cement	±1%	±1%	±1%
Accuracy of Fly Ash	±1%	±1%	±1%
Accuracy of Water	±1%	±1%	±1%
Accuracy of Addtive	±1%	±1%	±1%
Reference Weight	20t	30t	38t
Feeding Mode	Bucket	Bucket	Bucket
Power Standard	380V/50Hz	380V/50Hz	380V/50Hz

Remarks: when assessing the dynamic accuracy of concrete materials, the batching amount shall be between 30% and 100% of full measuring range of corresponding batch weigher in accordance with national standards.



-  Sany's Industrial Parks
-  Putzmeister (International Headquarters of Sany Concrete Machinery)
-  Sany Sales & Service Offices in China
-  Sany Sales & Service Offices overseas
-  Sany Global Coverage